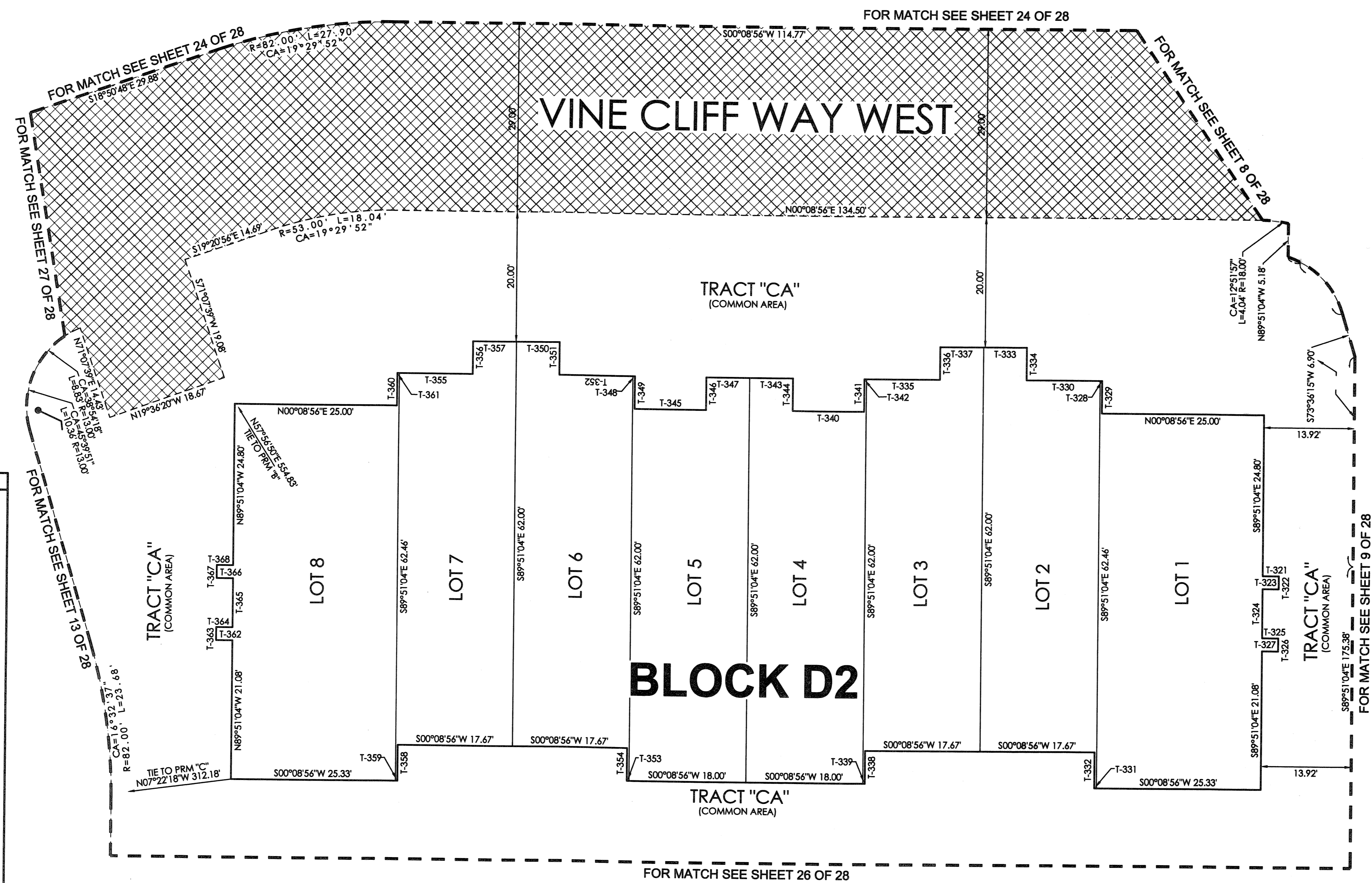
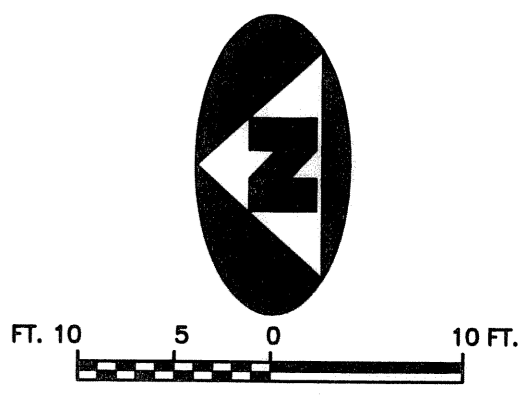


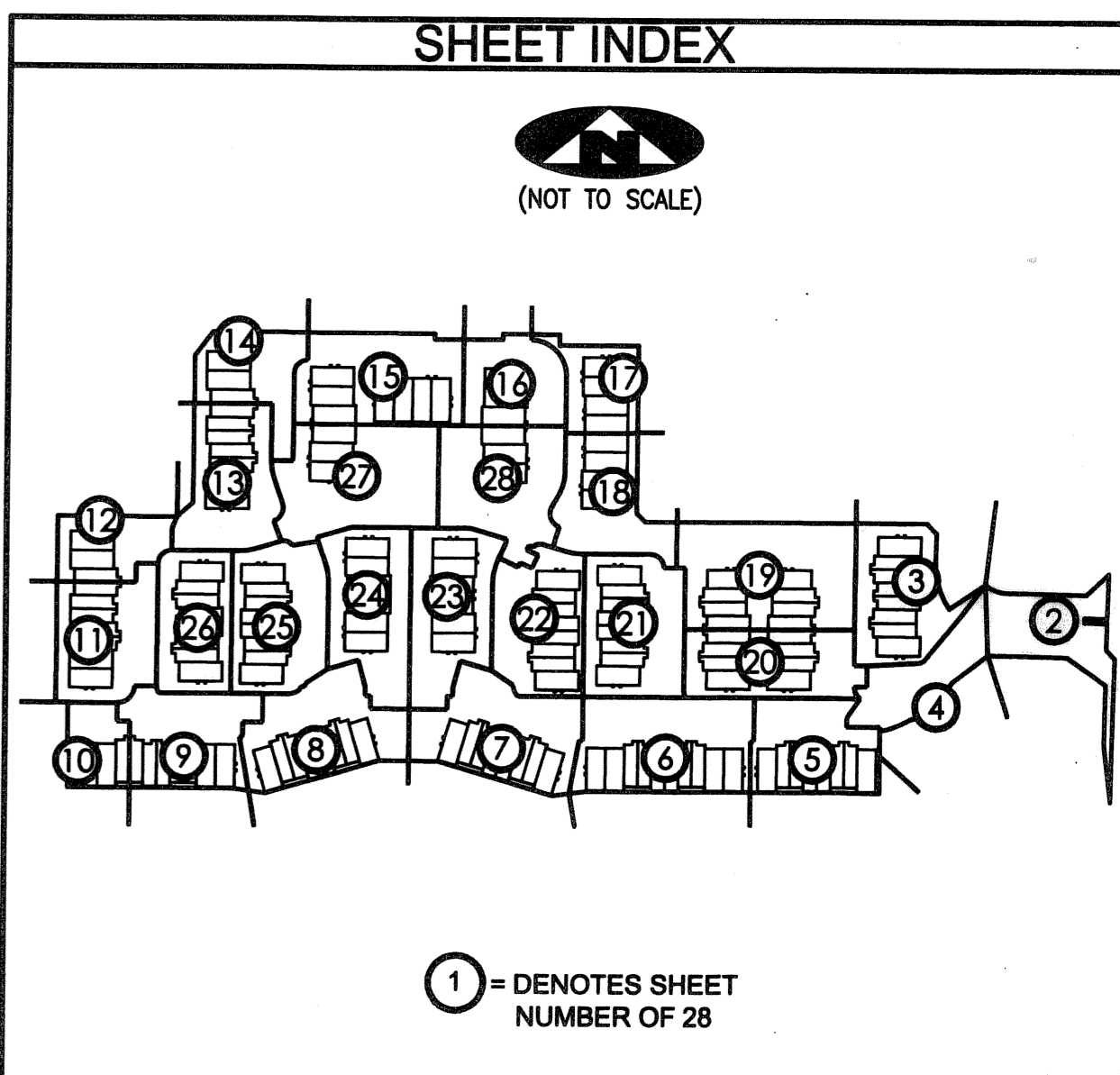
# CIELO TOWNHOMES AT THE SHOPS OF DONALD ROSS

BEING A REPLAT OF TRACT "R", THE SHOPS OF DONALD ROSS REPLAT OF TRACT "A", RECORDED IN PLAT BOOK 103, PAGE 142, PUBLIC RECORDS, PALM BEACH COUNTY, FLORIDA AND LYING IN THE NORTHWEST ONE-QUARTER OF SECTION 25, TOWNSHIP 41 SOUTH, RANGE 42 EAST, CITY OF PALM BEACH GARDENS, PALM BEACH COUNTY, FLORIDA.

181



TANGENT TABLE	
T-321	N00°08'56"E 2.50'
T-322	S89°51'04"E 2.00'
T-323	S00°08'56"W 2.50'
T-324	S89°51'04"E 7.58'
T-325	N00°08'56"E 2.50'
T-326	S89°51'04"E 2.00'
T-327	S00°08'56"W 2.50'
T-328	N00°08'56"E 0.33'
T-329	S89°51'04"E 5.00'
T-330	N00°08'56"E 11.33'
T-331	S00°08'56"W 0.33'
T-332	N89°51'04"W 5.46'
T-333	N00°08'56"E 6.67'
T-334	S89°51'04"E 5.00'
T-335	N00°08'56"E 11.33'
T-336	N89°51'04"W 5.00'
T-337	N00°08'56"E 6.67'
T-338	S89°51'04"E 5.00'
T-339	S00°08'56"W 0.33'
T-340	N00°08'56"E 11.00'
T-341	N89°51'04"W 5.00'
T-342	N00°08'56"E 0.33'
T-343	N00°08'56"E 6.67'
T-344	S89°51'04"E 5.00'
T-345	N00°08'56"E 11.00'
T-346	N89°51'04"W 5.00'
T-347	N00°08'56"E 6.67'
T-348	N00°08'56"E 0.33'
T-349	S89°51'04"E 5.00'
T-350	N00°08'56"E 6.67'
T-351	S89°51'04"E 5.00'
T-352	N00°08'56"E 11.33'
T-353	S00°08'56"W 0.33'
T-354	N89°51'04"W 5.00'
T-355	N00°08'56"E 11.33'
T-356	N89°51'04"W 5.00'
T-357	N00°08'56"E 6.67'
T-358	S89°51'04"E 5.46'
T-359	S00°08'56"W 0.33'
T-360	N89°51'04"W 5.00'
T-361	N00°08'56"E 0.33'
T-362	S00°08'56"W 2.50'
T-363	N89°51'04"W 2.00'
T-364	N00°08'56"E 2.50'
T-365	N89°51'04"W 7.58'
T-366	S00°08'56"W 2.50'
T-367	N89°51'04"W 2.00'
T-368	N00°08'56"E 2.50'



LEGEND	
(R)	DENOTES A RADIAL LINE
C/L	DENOTES A CENTERLINE
DE	DENOTES DRAINAGE EASEMENT
SUA	DENOTES SEACOAST UTILITY AUTHORITY
LS	DENOTES LIFT STATION EASEMENT
EAE	DENOTES EMERGENCY ACCESS EASEMENT
R	DENOTES RADIUS DISTANCE
L	DENOTES ARC LENGTH DISTANCE
CA	DENOTES CENTRAL ANGLE
LCB	DENOTES LONG CHORD BEARING
CHD	DENOTES CHORD DISTANCE
ORB	DENOTES OFFICIAL RECORDS BOOK
PB	DENOTES PLAT BOOK
⊙	DENOTES A SET PERMANENT CONTROL POINT (LB 7344)
⊠	DENOTES A SET PERMANENT REFERENCE MONUMENT (LB 7344)
■	DENOTES A FOUND PERMANENT REFERENCE MONUMENT (LB 2171)
▨	DENOTES A SEACOAST UTILITY EASEMENT (ORB 17773, PAGE 469)
▩	DENOTES AN INGRESS, EGRESS, DRAINAGE AND UTILITY EASEMENT (PB 103, PAGE 142)

**SURVEYOR'S NOTES**

- THE BASE BEARING, AS SHOWN HEREON, IS S01°22'09"W ALONG THE EAST LINE OF TRACT "B", THE SHOPS OF DONALD ROSS REPLAT OF TRACT "A", RECORDED IN PLAT BOOK 103, PAGE 142.
- IN THOSE INSTANCES WHERE UTILITY OR DRAINAGE STRUCTURES ARE CONSTRUCTED IN CONFLICT WITH THE PLATTED PERMANENT CONTROL POINT POSITION STRADDLERS MONUMENTED AS PERMANENT CONTROL POINTS WILL BE SET TO REFERENCE THE PLATTED POSITION.
- LINES THAT INTERSECT CURVES ARE NOT RADIAL UNLESS OTHERWISE NOTED.
- THIS INSTRUMENT WAS PREPARED BY WM. R. VAN CAMPEN, P.S.M. NO. 2424, IN AND FOR THE OFFICES OF ASSOCIATED LAND SURVEYORS, INC., 4152 WEST BLUE HERON BOULEVARD, SUITE 121, RIVIERA BEACH, FLORIDA, 33404

FILE: CIELOPLOT	
FB:	WO.NO.: P238
SCALE: 1"=10'	DATE: 12/25/2004
DWN: KVC	SHEET 25 OF 28

**ASSOCIATED LAND SURVEYORS, INC.**

4152 W. BLUE HERON BOULEVARD—SUITE 121  
RIVIERA BEACH FLORIDA 33404 LB NO. 7344  
PHONE: (561) 848-2102 FAX: (561) 844-9659 EMAIL: ALSURVEY@AOL.COM